

OCM GOLD FUND

INVESTOR AND ADVISOR CLASS

Quarterly Fact Sheet
As of June 30, 2021

Investor Class -- OCMGX
CUSIP -- 67087F101
NAV -- \$11.28

Advisor Class -- OCMAX
CUSIP -- 67087F200
NAV -- \$12.68

Investment Style

The OCM Gold Fund employs an active tiered approach to the gold mining industry. The portfolio is invested in major gold producers with progressively smaller positions in intermediate and junior gold producers along with exploration and development companies. While predominantly value oriented, the Fund seeks out companies that are growing production and reserves on a per share basis utilizing a disciplined approach to return on capital. The Fund also seeks out special growth opportunities within the precious metal sector.

Portfolio Manager



Greg Orrell is the president and portfolio manager of the OCM Gold Fund. Mr. Orrell has over 35 years of experience in the gold mining sector. He has been the portfolio manager of the Fund since 1996. Mr. Orrell received his BS in Economics and Business Administration from Saint Mary's College of California.

Investment Advisor

Orrell Capital Management is a specialty money manager in the precious metals mining sector. In addition to advising the OCM Gold Fund, the fund manages private and institutional accounts.

Contact Information

Shareholder Services
1-800-628-9403

Fund Objective

The Fund seeks long-term capital appreciation by investing primarily in common stocks of gold and silver mining companies.

Investor Profile

The OCM Gold Fund is designed for investors desiring diversification of their investment portfolio with a gold related asset to hedge against currency devaluation or inflation and are willing to accept the risks and volatility associated with investment in gold and gold shares

Performance

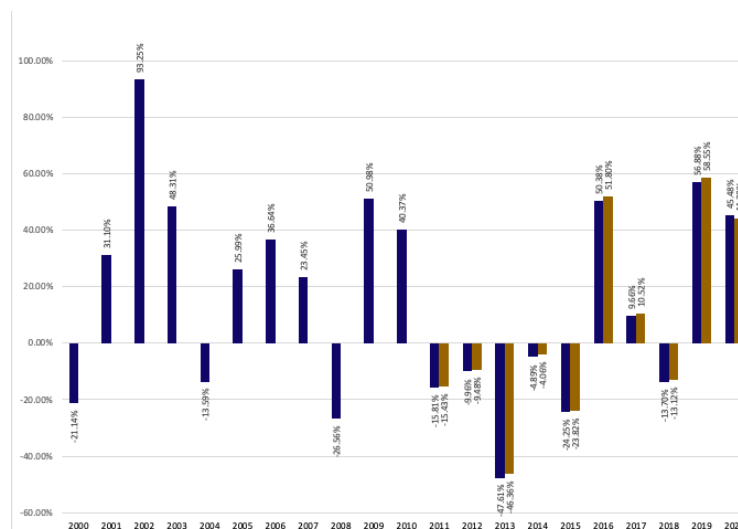
Total Assets: \$69.6 Million (Advisor \$52.8 Million/Investor \$16.8 Million)

Average Annual Returns %	YTD	1 Year	3 Year	5 Year	10 Year
OCM Gold Fund Advisor	-7.24	-11.66	31.29	9.25	-1.13
OCM Gold Fund Investor Without Sales Load	-4.57	-10.22	25.93	6.92	0.81
With Sales Load (4.50%)	-9.07	-14.72	21.43	2.42	-3.69
S&P 500 Index	17.99	36.45	18.16	17.35	15.35
Phil. Gold & Silver Index	-2.96	-3.43	18.16	3.33	-4.75

The table presents past performance, which is no guarantee of future results and may be lower or higher than current performance. Returns reflect applicable fee waivers and/or expense reimbursements. Had the Fund incurred all expenses and fees, investment returns would have been reduced. Investment returns and Fund share values fluctuate so that investor's shares, when redeemed, may be worth more or less than their original cost. Fund returns assume that dividends and capital gains distributions are reinvested in the Fund. Net Asset Value (NAV) Index returns assume dividends of the Index constituents in the Index have been reinvested. For performance information current to the most recent month-end, call toll-free 800-628-9403.

OCMGX/OCMAX

Calendar Year Performance Without Sales Load



The Fund's Total Annual Operating Expenses for the OCM Gold Fund Investor Class and Advisor are 2.18% and 1.68% respectively. Please review the Fund's Prospectus for more information regarding the Fund's fees and expenses. The Philadelphia Stock Exchange Gold/Silver Index (XAU) is a capitalization-weighted index featuring sixteen widely held securities in the gold and silver mining industry and is a good indicator of the performance of the common stock of companies in the gold and silver mining industry. The S&P 500 Index is a market-value weighted index consisting of 500 stocks chosen for market size, liquidity, and industry group representation. You cannot invest directly in an index, and, unlike the Fund, an index does not incur fees and expenses. There is no assurance that the Fund will achieve its investment objective.

Dividends

2007	1.418 LT
2009	0.599 LT
2010	2.514 LT
2011	1.016 LT
2012	0.469 LT
2014	0.608 LT
2015	0.003 LT
2016	1.752 LT
2017	0.658 LT
2018	1.664 LT
2019	0.573 LT
2020	0.209 OCMAX 0.127 OCMGX

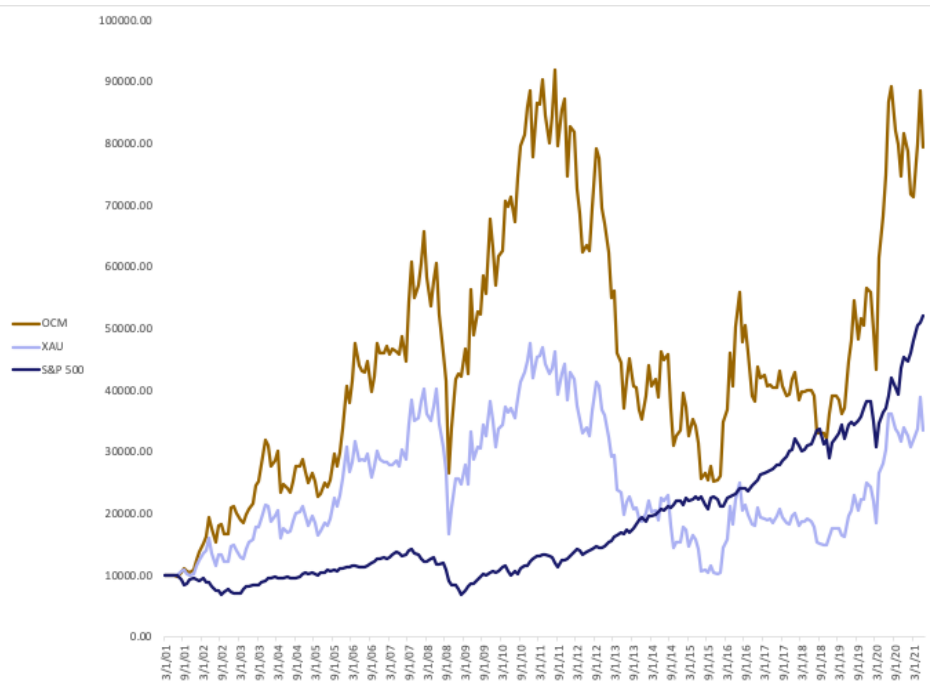
LT = Long Term

OCM GOLD FUND

INVESTOR AND ADVISOR CLASS

Quarterly Fact Sheet
As of June 30, 2021

20 Year Hypothetical Growth of \$10,000 Investment

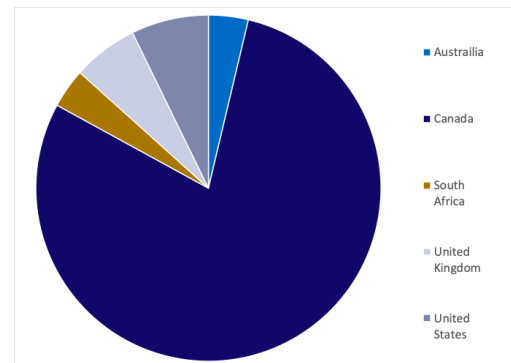


This chart illustrates the performance of a hypothetical \$10,000 investment made in the OCM Gold Fund Investor Class during the depicted time frame, compared to its benchmark index. Figures include reinvestment of capital gains and dividends, but the performance does not include the effect of any direct fees described in the Fund's Prospectus (e.g., short term trading fees) which, if applicable, would lower your total returns.

Top 10 Holdings	% of Portfolio
JAGUAR MINING, INC.	8.05%
AYA GOLD & SILVER IN	7.59%
AGNICO-EAGLE MINES	6.22%
WESDOME GOLD MINES	6.10%
WHEATON PRECIOUS MET	5.67%
BARRICK GOLD CORP	5.32%
NEWMONT CORP	5.30%
ENDEAVOR MINING CORP	3.87%
ANGLOGOLD ASHANTI	3.70%
ALAMOS GOLD INC	3.20%
Total Top 10	55.01%
Total Number of Holdings	62.00

Portfolio holdings are subject to change, vary over time and should not be considered a recommendation to buy any individual security.

Breakdown by Country



Additional Information

Please consider carefully the Fund's investment objectives, risks charges and expenses. Please refer to the Prospectus for important information about the investment company including investment objectives, risks, charges and expenses, which should be considered carefully before investing.

OCM Gold Fund

1-800-628-9403
www.OCMGoldFund.com
2600 Kitty Hawk Road, Suite 119
Livermore, CA 94550

Distributed by Northern Lights Distributors, LLC Member FINRA/SIPC

Orrell Capital Management, Inc. and Northern Lights Distributors, LLC are not affiliated entities.

6500-NLD-08302021

Portfolio Breakdown

	% of Portfolio
Major	25.26%
Intermediate	20.26%
Junior	24.86%
Exploration	11.58%
Royalty/Streaming	9.62%
Primary Silver	8.42%
Cash Equivalents	0.00%

Market Capitalization Breakdown

	% of Portfolio
Large (over \$10 billion)	24.67
Mid (\$1.5 billion - \$10 billion)	34.37
Small (\$150 million - \$1.5 billion)	28.66
Micro (under \$150 million)	10.14

NAV 52 Week Range As of 06/30/2021

OCMGX \$11.28
\$10.99-\$14.30

OCMAX \$12.68
\$12.35-\$16.09

Investor Class Information

Advisor Class Information

Minimum Investment: \$1,000	Minimum Investment: \$1,000
IRA Minimum Investment: \$100	IRA Minimum Investment: \$100
Subsequent Minimum Purchase: \$50	Subsequent Minimum Purchase: \$50
Redemption Fee: 1.50%	Redemption Fee: 1.50%
Purchases held less than 90 days	Purchases held less than 90 days
Sales Load: 4.50%	Sales Load: N/A
12b-1: 0.65%	12b-1: 0.15%
Expense Ratio: 2.18%	Expense Ratio: 1.68%

The fund invests in gold and other precious metals, which involves additional risks, such as the possibility for substantial price fluctuations over a short period of time and may be affected by unpredictable international monetary and political developments such as currency devaluations or revaluations, economic and social conditions within a country, trade imbalances or trade or currency restrictions between countries. The prices of gold and other precious metals may decline versus the dollar, which would adversely affect the market prices of the securities of gold and precious metals producers. The Fund may also invest in foreign securities which involve greater volatility and political, economic, and currency risks and differences in accounting methods. The Fund is non-diversified, meaning it may concentrate its assets in fewer individual holdings than a diversified fund. Therefore, the Fund is more exposed to individual stock volatility than a diversified fund. Prospective investors who are uncomfortable with an investment that will fluctuate in value should not invest in the Fund.